



Manteca

On October 7, 2008, six people met at the Brock Elliot Elementary school in Manteca to discuss key assets and problems that face the Manteca Planning Area and the county.

Thinking Locally

Results

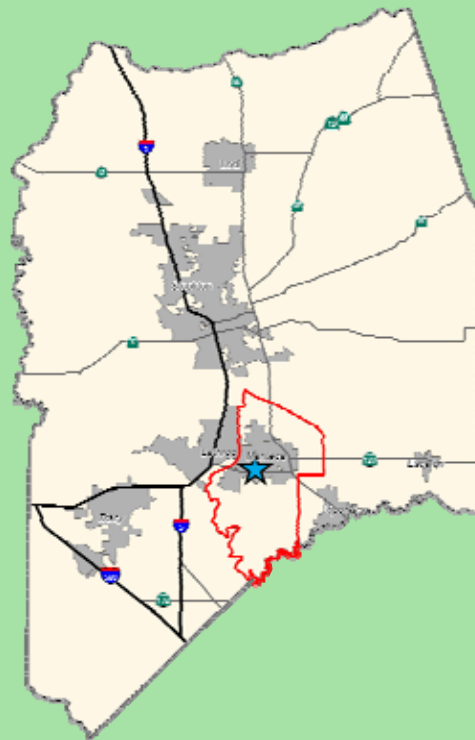
The following represents a summary of the top assets and problems raised during the exercise on Thinking Locally.

Top Community Assets:

- Highways
- Extensive adult education
- Location/close to the Bay Area
- Some night life
- Sunshine/Nature/Weather
- Agricultural water
- Labor supply
- Cycling/exercise trails and roads
- Local airport access
- New Jerusalem Airport
- Flat land
- Prices of housing
- Recreational opportunity (hunting, hang-gliding, fishing, crawdad fishing)
- ACE Train
- Regional Transit
- Hospitals/Retiree living/doctors/Kaiser
- Low crime
- Affordable to Families
- Good place to raise a family

Top Community Problems:

- Improve educated levels to support more employment opportunities
- Car theft/petty crime
- No industry to support good jobs
- Drug use problems
- Middle of nowhere (culturally isolated)
- Air quality
- Prices of Ag-land is to high for the next generation
- Amount of growth versus lack of infrastructure resources
- Lack of honesty/integrity
- Outdated (aesthetically) commercial plazas
- Hwy 205 bottleneck
- Need more ACE Train frequency
- Need more Regional Transit frequency



Thinking Regionally

Results

The following represents a summary of the top assets and problems raised during the exercise on Thinking Regionally.

Top San Joaquin County Assets:

- Port of Stockton
- Hwy 99 and I-5 for business travel
- Transportation for the Trucking Industry
- Location for Region
- Agriculture
- Waterways/Delta ecology and recreational resources
- Good County to raise a family/social network
- Cultural Diversity
- Educational range
- Proximity to many other cities
- Distribution hub (especially in Tracy and Stockton)
- Historic resources
- International Connections
- Lots of land to build large infrastructure

Top San Joaquin County Problems:

- Poor Air Quality
- Poor Water Quality (e.g., old wells)
- Lack of options for higher education
- Lack of a central information center
- Lack of recreation
- Negative image
- Poor licensing event process and procedure (Governmental obstructions)
- High taxes
- Lack of respectable/high paying jobs
- Graduate retention
- Foreclosure issue